



HAGLEY AND CLENT PARISH PROFILE



ONE CHURCH. THREE LOCATIONS



ST. JOHN THE BAPTIST

ST. LEONARD'S

ST. SAVIOUR'S

ST. JOHN THE BAPTIST, HAGLEY



ST. LEONARD'S, CLENT



ST. SAVIOUR'S, HAGLEY



ABOUT OUR CHURCHES

Welcome to the benefice of Hagley and Clent and our three beautiful churches. We thank you for considering us and hope you will reflect through prayer if God is calling you to serve our community here.

Nestled amid the beauty of the Clent Hills and the timeless heritage of Hagley Hall and its grounds, our rural parish churches serve thriving villages whilst being just 30 minutes from the vibrant city of Birmingham and the historic city of Worcester.

Together, our welcoming and inclusive churches seek to serve a community of around 10,000 parishioners. With our current 227 worshipers we bring together those committed to traditional Church of England practices alongside others with more modern evangelical expression. We'd love to grow this number so more people can know God's love. To do this, we're looking for a Priest who can help unite our team to better understand and address the different needs of our community, to better serve Jesus.

ONE CHURCH. THREE LOCATIONS

This profile has been written by a team of six church volunteers with input from 50 congregation survey responses

HOW WE DESCRIBE OURSELVES



WHAT WE LIKE MOST ABOUT OUR CHURCH

“The services are not repetitive”

“It is a beautiful setting and a peaceful and quiet place for prayer”

“It is always welcoming and helpful to new members”

“There are quite a few younger members of the church starting to take on more roles within the church”

“You can meet a variety of folk in the congregations at all three churches”

“It is a place of solitude, reflection and beautiful memories”

“There is a welcoming feeling as soon as you come in”

“There is a peaceful space for reflection at St. John’s and a busy ‘hub of the village’ atmosphere at St. Saviour’s”

The person we are looking for

ESSENTIAL CHARACTERISTICS

- **Compassionate** and able to relate well to others
- A **team player** who will support and encourage the existing team
- Sees a value in **enabling diverse worship** styles
- A strong and visible **personal Christian faith**, rooted in prayer and discipleship
- A teacher of **scripture**
- An **inclusive** mindset with an interest in the wider church

DESIRABLE CHARACTERISTICS

- Experience of change management
- Energetic and inspirational
- Sensitive to people of different traditions and theologies
- Comfortable communicating in various ways



Our biggest challenges

- We would like to develop a programme to attract more members, especially the next generation of Christians
- We would like to become a vibrant hub in the community and engage a more diverse mix of people
- We would like to accommodate different worship styles to allow more people to connect with God
- We would like to inspire more people to take active roles in our church groups, especially younger people
- We would like to make the church more eco friendly



Mission Statement

As one member of our congregation nicely summarised it, our church is “traditional yet modern, conventional yet experimental, old yet young-at-heart, contemplative yet vibrant – a family of individuals”.

This strength is also one of our biggest challenges.

Our mission is to grow and sustain our congregation for the future by welcoming a **diverse and younger mix of people**, with different worship styles, while balancing and respecting the **traditional views** of our long-standing members. We strive to create an **inclusive community** where everyone feels **valued** and can **share God love** and thrive in their spiritual journey with **Christ**.

“There is neither Jew nor Gentile, neither slave nor free, nor is there male and female, for you are all one in Christ Jesus.”

1 Corinthians 12:12-14

We're here to support you



TURN THE PAGE TO MEET YOUR NEW TEAM...



Revd Kim Topham
Associate Priest



Revd David
Blackburn
PTO



Alison Lewis
LLM



Rosie Padmore
ALM



Jenny Moulder
ALM & PSO



Harry Grove
PCC Secretary



Susan Priest
PCC Secretary &
Parish Admin.



John Gowar
Churchwarden



Nick Maybee
Churchwarden



Neil Harvey
Churchwarden



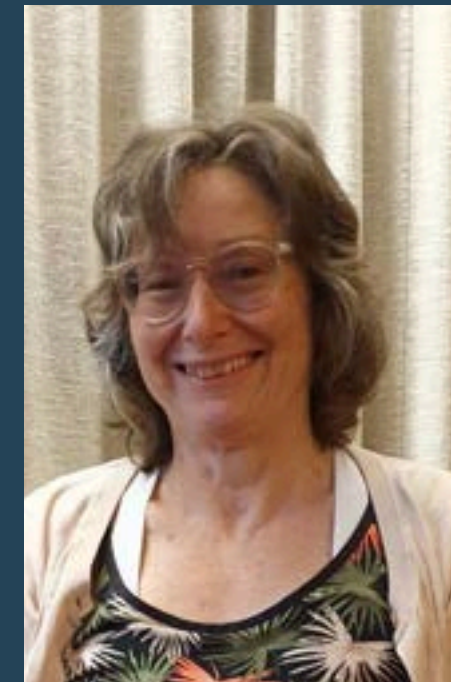
Michael Norris
Churchwarden



Neill Robb
Churchwarden



Allan Smith
Churchwarden



Fiona Taylor
Churchwarden



Natalie Baker
PSO

What you can expect from us

We understand that there is a lot involved in being the Priest of the benefice and its three churches and we don't expect anyone to be able to do it all alone!

We believe that God will support you on your journey and we're also here to support you as best we can. Here's how we'll do it...

A GOOD SIZED TEAM AND WILLING VOLUNTEERS

From our amazing Associate Priest to our churchwardens, servers, sidespeople, readers, PCC team, florists, and musicians, everyone plays a vital part in creating a welcoming and spiritually uplifting environment.

ENCOURAGEMENT OF YOUR DEVELOPMENT

We support the Diocese of Worcester's mission to provide training and development opportunities to enable you to grow and feel supported and equipped for your mission here.

SPIRITUAL SUPPORT

We will support you with prayer and encouragement during all the opportunities and challenges that your ministry with us may bring. We pray now that God will guide you in deciding what your next step will be.

WORK-LIFE BALANCE

Ministry may be a calling, but everyone needs to re-charge and take care of their mental wellbeing! We will help to protect your day off and support your relationships with those you share your life with.

SHARING GODS LOVE IN THE COMMUNITY



We show discipleship every time we meet and share a cuppa and we celebrate **Gods enduring love** within our community.

Diocese and Deanery

All three of our churches sit within Greater Dudley Deanery, part of the Diocese of Worcester. The diocesan vision is to grow as Kingdom People, sharing the good news of Jesus' love in Worcestershire and Dudley through churches that are growing in health and sustainability.

DIOCESAN PRIORITIES 2023 –2030

- Double the number of **children and young people** worshipping in our churches.
- Create 100 **new worshipping communities** offering a range of ways for people to come to faith and worship God. (eg Forest Church / Café Church / Walking Church).
- Invest in the **renewal** of around a dozen churches to ensure that each major area of population has at least one church with 150 people attending weekly, enabling them to support other local churches.
- Underpin these by investing in clergy and lay leaders, providing training and development opportunities to enable them to grow and feel supported and equipped for mission

One size doesn't fit all – the diocese want to strengthen local churches and encourage and resource them to explore what it might mean to grow in health and sustainability in their context as they worship God, make disciples, share hope, and transform communities.



Diocese and Deanery

GREATER DUDLEY DEANERY

The Greater Dudley Deanery (GDD) was formed during a diocesan reorganisation in 2021. It covers the whole of the Metropolitan Borough of Dudley along with a handful of parishes in Sandwell, Wolverhampton and Worcestershire. This makes the deanery relatively large nationally, and the largest by population in the diocese. The benefit of a larger deanery is the **greater opportunity for team working** between clergy and churches, and for drawing suitably significant groups together for training.

The deanery is led by a Deanery Leadership Team (DLT) which includes an Area Dean, two Sub-Deans, and up to five lay members. The DLT works closely with the diocesan training department to provide **training** for clergy and laity at all levels of ministry. It also guides the agenda for the Deanery Synod, and represents the deanery at certain diocesan meetings.

The expectation is that Deanery Synod acts as a focus and stimulus for parishes to deliver the mission priorities of the diocese. Deanery Synod meetings serve as a place of mutual support, encouragement and challenge to lift individual churches beyond the parochial and broaden understandings of mission. Increasingly churches work together, **sharing resources** and opening up **new opportunities for mission**.

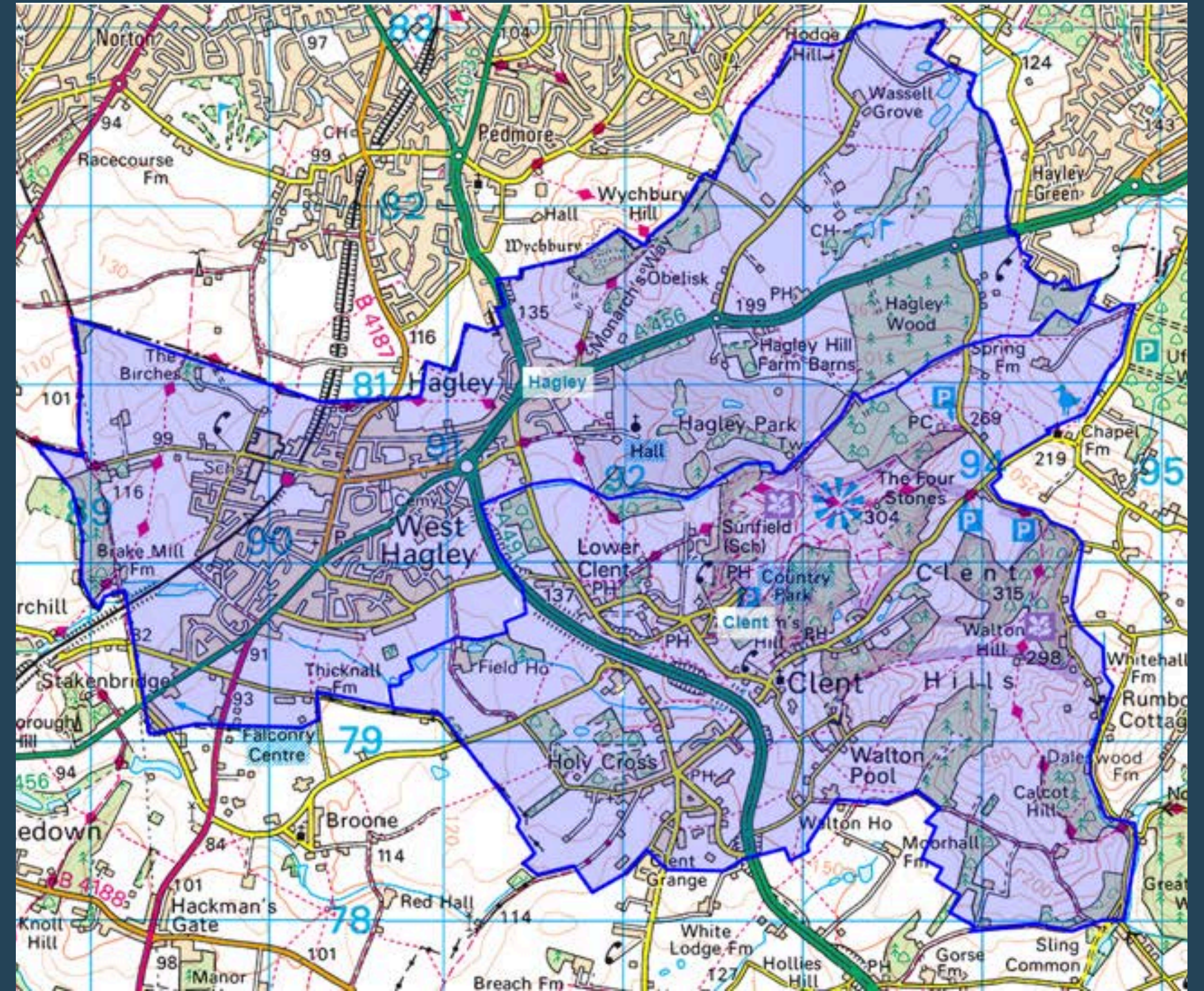
The Deanery Chapter, comprising over 30 licensed ministers, is primarily a place of **mutual support and encouragement**, as well as a place to discuss matters of business. The Chapter meets every 4/5 weeks over lunch, and meetings are well attended.

The task of growing healthy and sustainable churches in the Greater Dudley Deanery is challenging. Through **good, collaborative working** within and between parishes, between clergy and laity, and between deanery and diocese, along with a great deal of **prayer**, we face the challenge and **celebrate together as God's Kingdom grows**.

About our Parishes

For those who enjoy walking, cycling, horse riding or simply being in nature, our parishes are ideally situated. The surrounding Clent hills is a well-known beauty spot cared for by the National Trust. There are walking trails and a café where dogs are welcomed.

Both Hagley and Clent villages are well supplied with shops, cafes, restaurants, and pubs.



Our Parish History

HAGLEY

1130

Original building of St. John the Baptist believed to be built.

1850+

Reconstruction and restoration of St. John the Baptist which included adding a spire and peal of eight bells.

1908

St. Saviour's built to serve the needs of a growing population following the completion of the railway line and station through the village.

1970–2013

St. Saviour's expanded with a church hall, gallery and offices. The Wychbury Room was completed at St. John the Baptist [shared with the cricket club] providing a great social space.

CLENT

1199

Earliest mention of the church of St. Leonard.

1400+

St. Leonard's rebuilt with new tower and chancel, following the addition of the south aisle in 1270.

1850+

St. Leonard's further altered with new porch, vestry and north aisle.

1900+

Clent Parish hall opened in 1906. It was later expanded in the 21st Century with a new side building that houses Clent Connect.

2022

Benefice of Hagley and Clent created. Our church patron is currently Viscount Cobham.

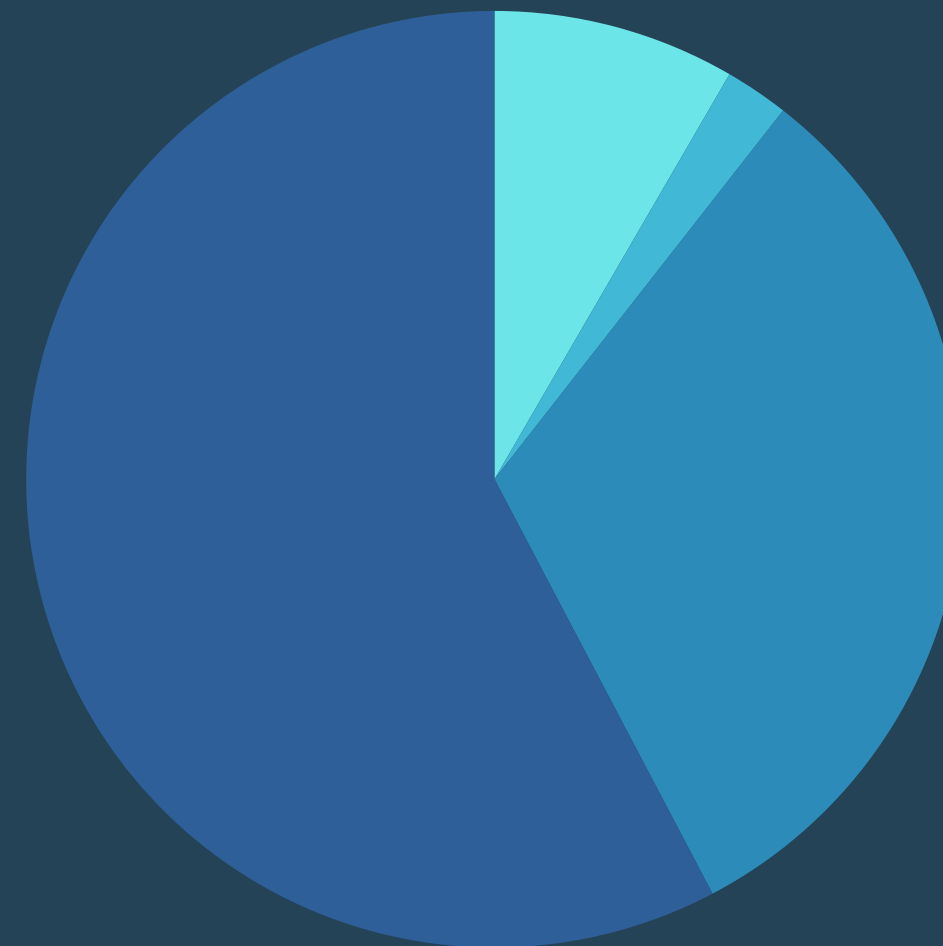
Our Church Statistics

Electoral Role (16 May 2024 PCC Meeting):
184 across both Hagley & Clent Parishes

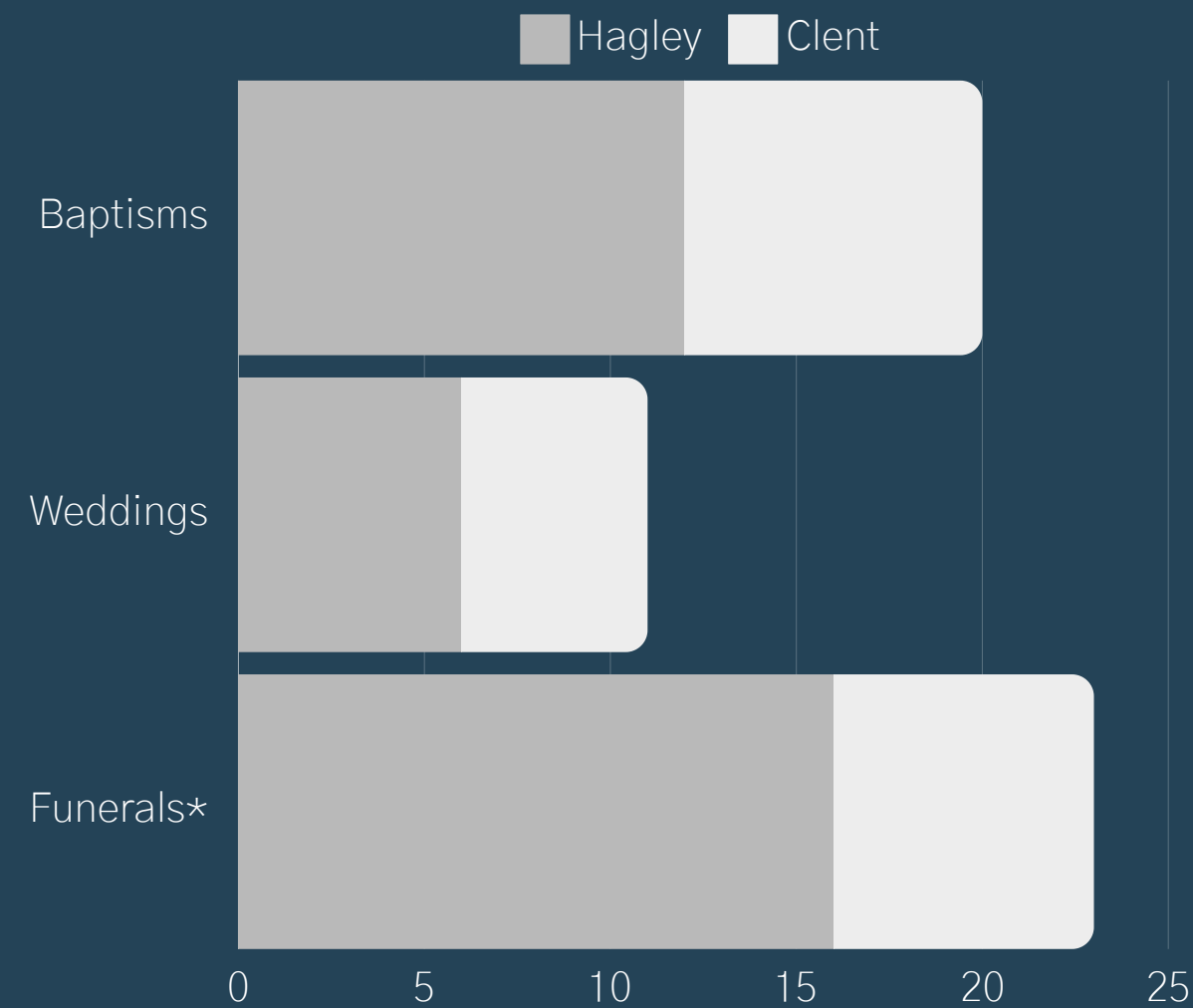


- Children (Age 0-10)
- Young People (Age 11-17)
- Adults (Age 18-69)
- Adults (Age 70+)

	St. Saviour's & St. John the Baptist	St. Leonard's
Regular worshipping community	182	45
Usual Sunday	61	27
Average weekday, (October '23)	20	7
Advent (carol concerts, nativities, crib services)	472	204
Christmas	232	55
Easter	70	100



Worshipping community across all three churches



ONE CHURCH. THREE LOCATIONS

*We have two active churchyards at St. John the Baptist and St. Leonard's
All data is taken from the 2023 Statistics For Mission Return unless otherwise indicated

Our Typical Service Pattern

We value a variety of different worship styles and it is something the congregation is keen to continue to explore with our new Priest.

	Sunday Morning Worship (10:30 AM)
1 st Sunday in month	Holy Communion at St. John the Baptist Worship 4 All at St. Leonard's
2 nd Sunday in month	Holy Communion / Sunday Club at St. Saviour's Holy Communion at St. Leonard's
3 rd Sunday in month	Holy Communion at St. John the Baptist Family Service/Café Church (rotates around all 3 churches)
4 th Sunday in month	Holy Communion / Sunday Club at St. Saviour's Holy Communion at St. Leonard's
5 th Sunday in month	Altogether Holy Communion (rotates around all 3 churches)
	Wednesday Morning Worship (10:30 AM)
Every other Wednesday	Said Communion at St. Leonard's
	Thursday Morning Worship (10:30 AM)
Every Thursday	Said Communion at St. Saviour's



Children and Young People

Sunday Club is held during term time on the second and fourth Sundays at St. Saviour's in Hagley. The children begin the service in church and then leave to follow the Roots programme mixed with some games and crafts to help provide a better understanding of **God, who is at the heart of everything we do**. At the end of the service they enjoy sharing their experience with the congregation from the front of church. We also hold several **parties** throughout the year to celebrate events such as Christmas and Epiphany.

Sunday Club is currently smaller than we would really like and we have a desire and passion to see it grow and flourish, both in terms of the number of children and in the cadence.

We have a small and dedicated team that organise a monthly **family service** that moves around our three churches. Styles vary from more formal services, to café church, to having the children actively involved in the presentation of the service. It is an opportunity to try new styles and formats and it is a delight to provide a service that the whole church family can engage with.

Our passion is to see this service grow and become a cornerstone of monthly worship engaging the whole church family of all ages in **praise, worship and discipleship**.

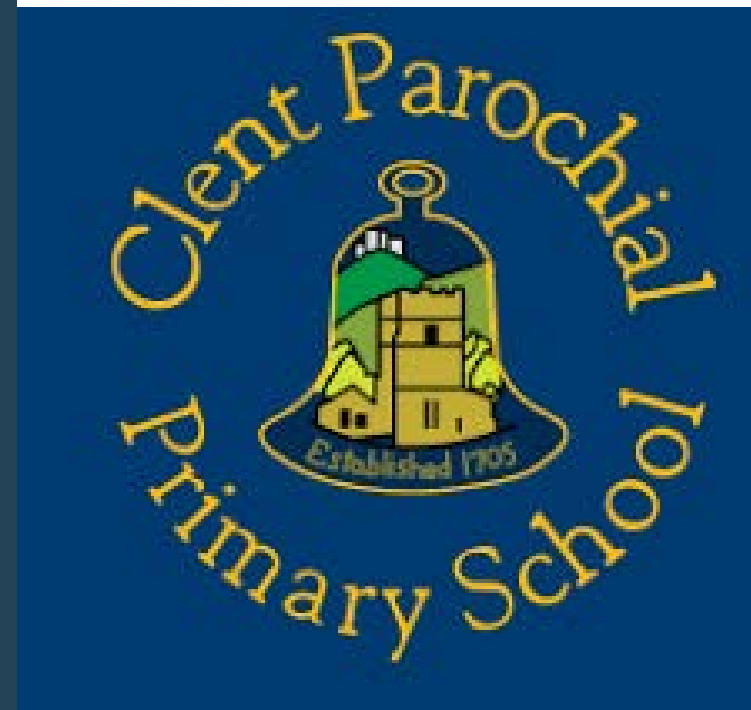


Evangelism and Outreach



ALPHA

We have recently run two Alpha courses, including one in conjunction with the nearby Hagley Free Church. Twelve guests regularly joined for the whole of the last course, meeting weekly for fellowship, cake, video presentations from Alpha International on fundamental elements of the Christian Faith, and the opportunity to grapple with the topic in small groups. We're currently planning our third course and we're excited to see how God will act as we welcome new people to explore life's big questions.



CHILDREN

There are excellent primary/secondary schools in both Hagley and Clent. The church has a great existing link with Clent Parochial Primary School where our Associate Priest is actively involved as a Foundation Governor. A connection is maintained through monthly assemblies and annual welcome and farewell services for the children within the church. A junior choir has developed from within the school as well. There is also a fortnightly Bible Book Club which everyone is welcome to attend.



CONTACT

Contact is our parish magazine. It was revamped in 2024 and is now printed in colour ten times a year. It is hand delivered to church and non-church subscribers across the parish as well as being posted further afield where requested. It contains a wide variety of articles, reflections, and parish information.

Community Focused

Clent Connect is a Community Benefit Society and was born from the out-pouring of community spirit and support during the Covid pandemic. The original vision and aim was, and still is, to “Provide the residents of Clent with a friendly, vibrant, socially inclusive community hub incorporating a café and small shop to create a focus and enhance village life”.

The **Hagley Hub** launched in 2023 as a warm space in St. Saviour’s to cater for winter demand. It has now grown into a year round [every Tuesday during term time] community-led multigenerational gathering that welcomes all for a cuppa and a chat in a bustling atmosphere. It is supported by different local groups and businesses.

We also support local **Food Banks** by collecting goods in our weekly services and donating the collections from our harvest festivals.



Social Life



CHURCH

Across the three congregations we are actively involved in [Deanery Synod](#) and are particularly taken by its recent focus on reaching more families and children.

We have a [Pastoral Care Group](#) who meet regularly to keep in touch with those who are housebound, unwell or bereaved.

Our [Flower Arrangers](#) take great pride in their work. They organise flower festivals and work with local societies to encourage the community to view and enjoy the displays.



SOCIAL

We run an annual [Lent Course](#) which is an opportunity to come together [with other churches in the village] and tackle a short course in a friendly environment.

We are a community that loves food and we host events such as [Hot Cross Bun Breakfasts](#) and [Pancake Parties](#) which are enjoyed by all.

We hold a biannual [Talents Contest](#) with a twist. The congregation take £10 from the church and attempt to multiply it. We've had people selling homemade honey, running quizzes, hosting lunches and running craft fairs!



MUSIC

The benefice has three [Organs](#) that are used extensively in services, both skilfully played by trained [Organists](#). We're also fortunate to have a small [Orchestra](#).

We have a [Handbell Group](#) in Hagley and a lively [Bell Ringing Group](#) in Clent, both of which meet to practice weekly. The latter has even been on tour!

Clent has a thriving [Community Choir](#) and [Junior Choir](#) made up of children from the local primary school. They practice in church and are regularly involved in services.



GROUPS

We have two active [Mother's Union Groups](#) that partake in a range of activities, talks, coffee mornings and trips.

Our [Eco Group](#) formed in 2023 with an aspiration to improve the environmental credentials of the benefice. To date, St. Leonard's has received a bronze award with the other churches actively working to achieve this same standard.

We have a local [Churches Together](#) group. While we haven't officially reformed since the pandemic this is something we'd love to explore and reignite.

Hosted Events



HAGLEY MUSIC FESTIVAL



EX CATHEDRA



ANNUAL CRICKET MATCH



HARVEST CONCERT



SOCIAL EVENINGS





Finance

THE TREASURER AND FINANCE COMMITTEE ARE LOOKING FORWARD TO WORKING WITH THE NEW INCUMBENT.

CLENT

St. Leonard's Church is in a healthy financial state, paying its ministry share in full. Our buildings are in sound condition with no immediate expenditure planned. Additionally, the Clent Church Lands Charity helps to fund the upkeep of the parish fabric.

HAGLEY

The church has reserves which provide income for its needs. The church pays its full parish share although this does result in a small loss each year which is covered by the reserves. There is a keenness and willingness to address this shortfall through stewardship and we are active in the community to support fundraising through a variety of means.

FRIENDS OF ST. JOHN'S

The Friends of St. John's was formed in the 1980s to raise money towards the upkeep of the church and to fund extensive restoration work on the roof and other parts of the fabric. Since then, the Friends have continued to actively support the maintenance of the church.

Our Facilities



ST. SAVIOUR'S CHURCH HALL

The church hall is well used throughout the week by a wide variety of church and non-church groups including; Hagley Hub, coffee mornings, dance and exercise groups and Rainbows.



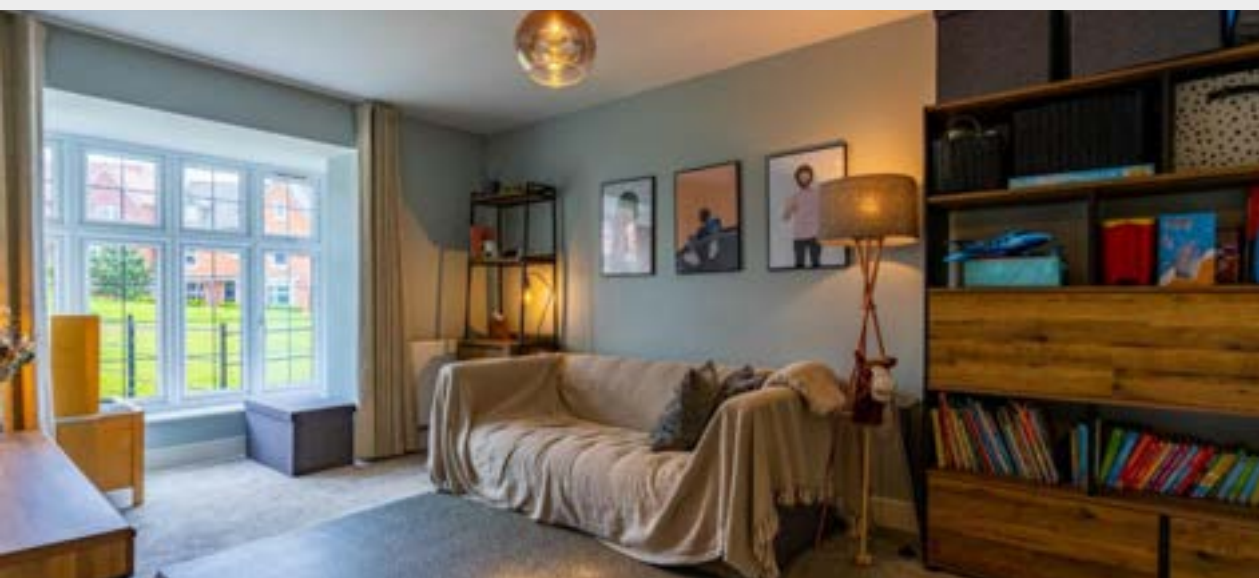
WYCHBURY ROOM

Adjacent to St. John the Baptist, the room is used by Hagley Cricket Club, local community cricket events and as a practice room for a variety of groups. It is an excellent facility in a great location.



CLENT PARISH HALL

The hall is situated close to St. Leonard's church and is popular for group hire and private functions. It can seat up to 100 people and is home to the Clent Connect Shop and Hub that was established in 2023.



Your rectory - subject to contract

Subject to completion, our new Priest will occupy this recently built executive 4-bed detached home situated within a well-regarded area adjacent to open space. Central to all three churches, this lovely home has an impressive footprint of accommodation arranged over three storeys. There is a versatile reception room, a kitchen dining family room and a shower room situated on the ground floor.

Prestigious location ▪ Pleasant outlook over open space to the front ▪ Spacious kitchen dining family room ▪ Ground floor shower room ▪ First floor bathroom ▪ Two ensuite shower rooms ▪ Private south-facing rear garden ▪ Detached garage ▪ Carport ▪ Plentiful driveway parking

Schools

Both Hagley and Clent Parishes boast schools renowned for their excellence and supportive learning environments.

From Hagley Primary School and Haybridge High School, known for their strong values and academic achievement, to Clent Parochial Primary School and the Catholic High School in Hagley, which instill Christian values, we have a diverse range of educational opportunities.

Additionally, Sunfield provides specialised education, care, and therapy for children and young people with a variety of social, emotional, physical, and learning difficulties, including autism and visual impairment.

HAGLEY PRIMARY SCHOOL & KINDERGARTEN

Ofsted Rating: **Good**

CLENT PAROCHIAL PRIMARY SCHOOL

Ofsted Rating: **Good**

HAYBRIDGE HIGH SCHOOL (A FOUR STONES MULTI ACADEMY TRUST SCHOOL)

Ofsted Rating: **Good**

CATHOLIC HIGH SCHOOL

Ofsted Rating: **Good**

SUNFIELD INDEPENDENT SPECIALIST SCHOOL

Ofsted Rating: **Good**

Healthcare and Care Homes

Hagley and Clent provide a range of healthcare options, including several medical surgeries and dental practices.

For older people and those with dementia, we are fortunate to have The Gables, Chandos Lodge and Field House Care Homes right on our doorstep, should you need to consider care options for a loved one.

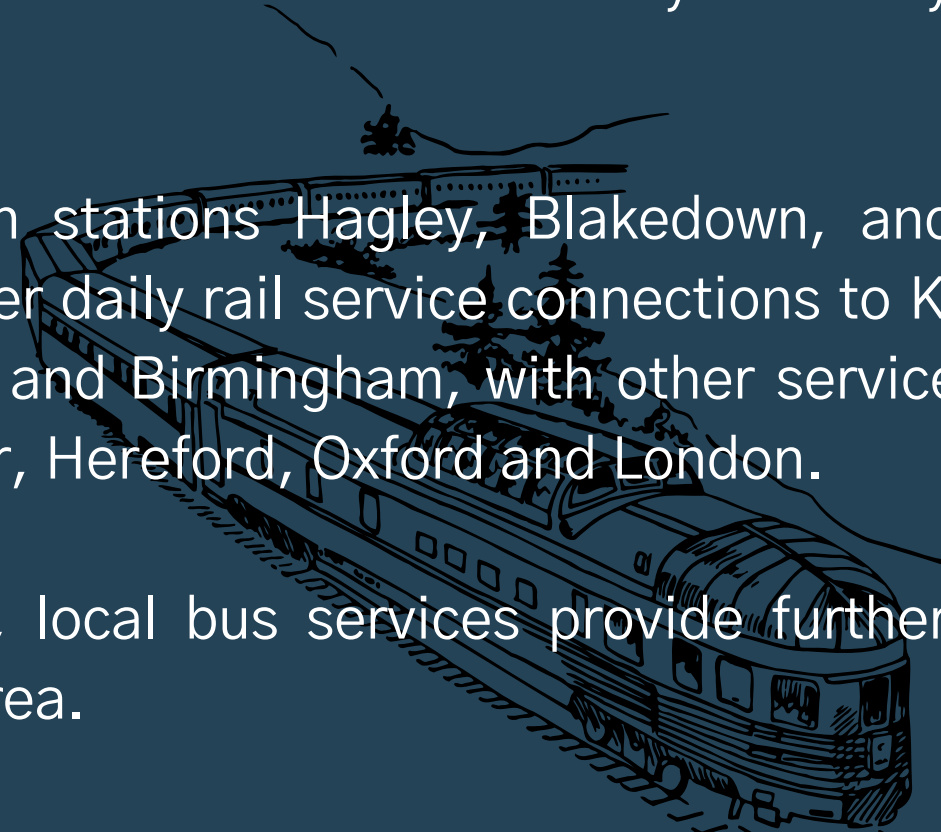
Transport Links

Hagley and Clent are both served by a variety of transport options.

Nearby train stations Hagley, Blakedown, and Stourbridge Junction offer daily rail service connections to Kidderminster, Stourbridge and Birmingham, with other services connecting to Worcester, Hereford, Oxford and London.

Additionally, local bus services provide further accessibility within the area.

With easy access to the M5 motorway at junctions 3 and 4 as well, Hagley and Clent offer great connectivity for both local and long-distance travel.





**One church.
Three locations**

Acknowledgments

Thank you for reading this far. We know that looking for a new post can be a challenging time so we pray that you will find the place that God is calling you to be... hopefully it will be with us!




- Parish profile team (pictured): From left to right: Jon Bryant, Natalie Baker, Sarah Piper, Jenny Moulder, Michael Norris and Louise McMichael
- Guidance on profiling process from Revd Kim Topham
- Text input for parish profile from Harry Grove, Louise McMichael, Martin Whittaker and Michael Norris
- Photos from many members of the team
- Content and admin support from Susan Priest
- Thanks to the 50 members of our congregations who took the time to complete the profile survey
- All people with recognisable faces have given consent for their photos to be used in publicity materials for the church
- Branding and mission statements for the Diocese of Worcester were taken from: <https://www.cofe-worcester.org.uk/>



Contact Information

APPLICATION FORMS AND DETAILS:

THE BISHOP'S OFFICE

-  01905 731 599
-  bishop.worcester@cofe-worcester.org.uk
-  The Bishop's Office, The Old Palace, Deansway, Worcester WR1 2JE

FOR AN INFORMAL CHAT ABOUT THE ROLE:

Revd Kim Topham: 07952 162373

Archdeacon Nikki Groarke: 01905 773301

ST. JOHN THE BAPTIST

Hall Lane, Hagley, Stourbridge,
West Midlands, DY9 9LG

ST. LEONARD'S

St. Leonard's Square, Church Avenue,
Clent, Worcestershire, DY9 9PN

ST. SAVIOUR'S

1 Park Road, Hagley, Stourbridge,
West Midlands, DY9 0NS